

## INSTRUMENT APPROACH CHART - ICAO

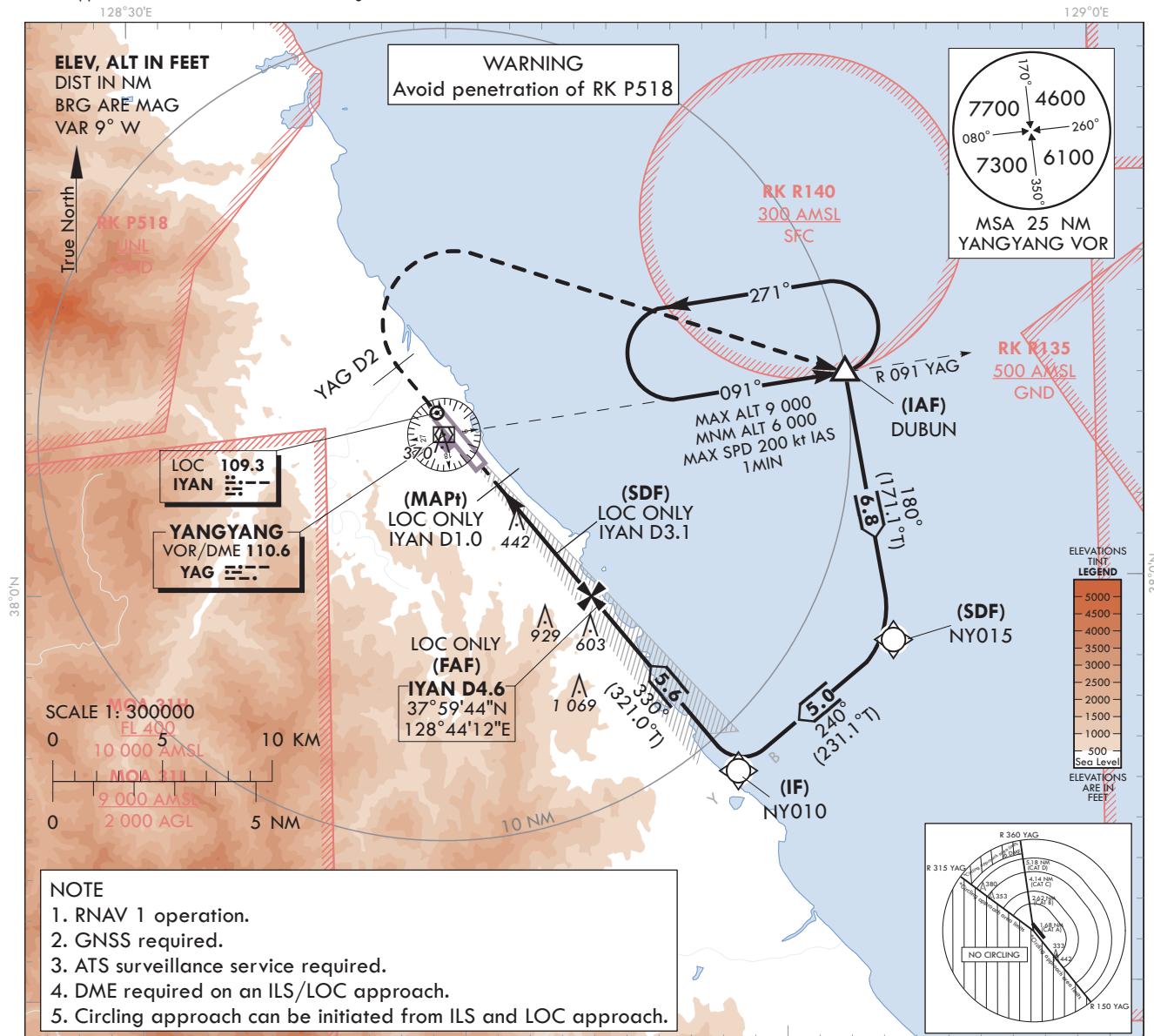
AERODROME ELEV **241** ft  
HEIGHTS RELATED TO  
THR RWY 33 - ELEV **227** ft

GANGNEUNG	APP	124.6
YANGYANG	TWR	118.85
		124.375

**YANGYANG/IntI(RKNY)**

**ILS Z or LOC Z RWY 33**

Note : Approach and circle-to-land Under ICAO Flight Procedures.



RECOMMENDED PROFILE(LOC ONLY)	DME IYAN	4	3	2
Final Approach Gradient 5.31%(323 ft/NM)	ALT(HGT)	1 523 (1 296)	1 200 (973)	878 (651)

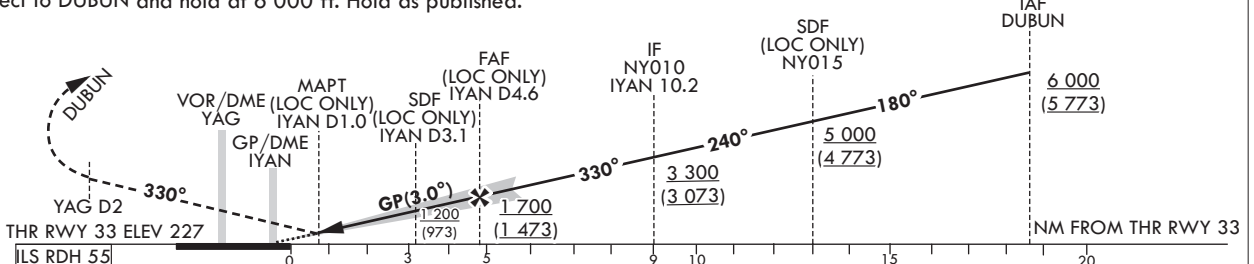
TRANSITION ALT 14 000  
TRANSITION LVL FL 140

### MISSED APPROACH

Climb straight ahead until YAG D2, then turn right direct to DUBUN and hold at 6 000 ft. Hold as published.

NOTE

1. Missed approach turn limited to 200 kt IAS maximum.



							Knots	60	90	120	150	180
OCA (H)		A	B	C	D	Rate of descent	V/V fpm	318	478	637	796	955
Straight-in Approach	CAT I	427 (200)					*Timing Not authorized for defining MAPt. *Circling Not authorized west of RWY 15-33, area on between R 150 and R 315 YAG and area beyond 6 DME of between R 315 and R 360 YAG.					
	LOC	700 (473)										
Circling		700 (459)	740 (499)	1 210 (969)	1 230 (989)							

Change : Information of landing minima(OCA(H)).		
---	--	--

YANGYANG/Intl(RKNY)  
ILS Z or LOC Z RWY 33

## AERONAUTICAL DATA TABULATION

ILS/LOC Z Approach to RWY 33 from DUBUN		
Fix/Point		Coordinates
DUBUN(IAF)		38°05'14.5"N 128°52'13.8"E
NY015(SDF)		37°58'31.2"N 128°53'33.6"E
NY010(IF)		37°55'22.3"N 128°48'38.8"E
D4.6 IYAN(FAF LOC ONLY)	BRG 329.92° / 4.55 NM IYAN	37°59'43.9"N 128°44'11.5"E
D3.1 IYAN(SDF LOC ONLY)	BRG 329.92° / 3.10 NM IYAN	38°00'51.7"N 128°43'02.1"E
D1.0 IYAN(MAPt LOC ONLY)	BRG 329.92° / 1.00 NM IYAN	38°02'29.7"N 128°41'21.8"E
THR RWY 33		38°03'09.21"N 128°40'41.25"E
IYAN DME		38°03'13.8"N 128°40'30.0"E
D2 YAG	HDG 330	38°05'28.5"N 128°38'18.4"E
DUBUN	R 091 YAG/ 10.00 NM YAG	38°05'14.5"N 128°52'13.8"E



YANGYANG/Intl(RKNY)  
ILS Y or LOC Y RWY 33

## AERONAUTICAL DATA TABULATION

ILS/LOC Y Approach to RWY 33 from DUBUN		
Fix/Point		Coordinates
DUBUN(IAF)		38°05'14.5"N 128°52'13.8"E
D9.2 IYAN(IF)	BRG 329.92° / 9.16 NM IYAN	37°56'08.9"N 128°47'51.2"E
D7.0 IYAN(SDF)	BRG 329.92° / 7.00 NM IYAN	37°57'49.6"N 128°46'08.4"E
D4.6 IYAN(FAF LOC ONLY)	BRG 329.92° / 4.55 NM IYAN	37°59'43.9"N 128°44'11.5"E
D3.1 IYAN(SDF LOC ONLY)	BRG 329.92° / 3.10 NM IYAN	38°00'51.7"N 128°43'02.1"E
D1.0 IYAN(MAPt LOC ONLY)	BRG 329.92° / 1.00 NM IYAN	38°02'29.7"N 128°41'21.8"E
THR RWY 33		38°03'09.21"N 128°40'41.25"E
IYAN DME		38°03'13.8"N 128°40'30.0"E
D2 YAG	HDG 330	38°05'28.5"N 128°38'18.4"E
DUBUN	R 091 YAG/ 10.00 NM YAG	38°05'14.5"N 128°52'13.8"E

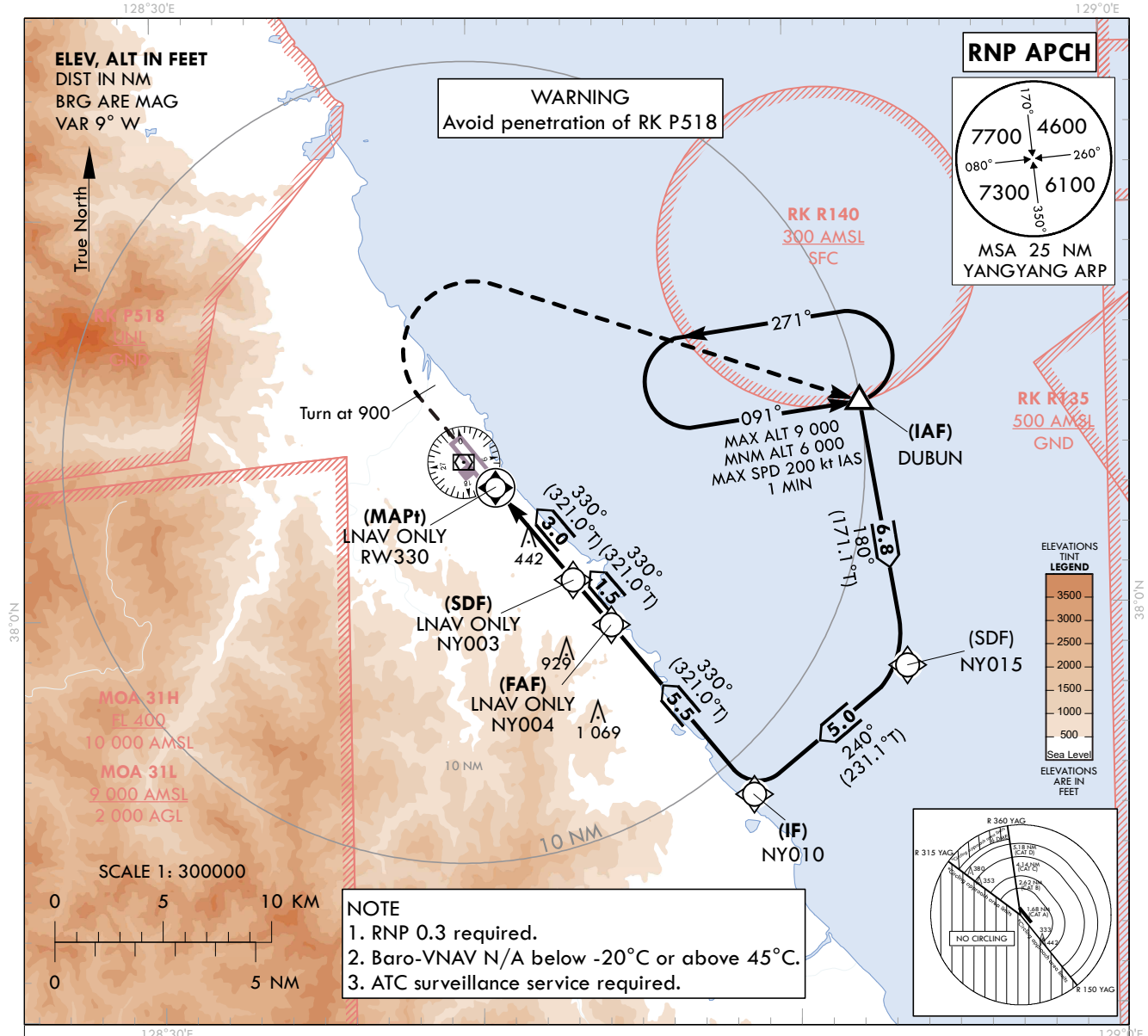


AERODROME ELEV **241** ft  
HEIGHTS RELATED TO  
THR RWY 33 - ELEV **227** ft

GANGNEUNG	APP	124.6
YANGYANG	TWR	118.85
		124.375

**RNP RWY 33**

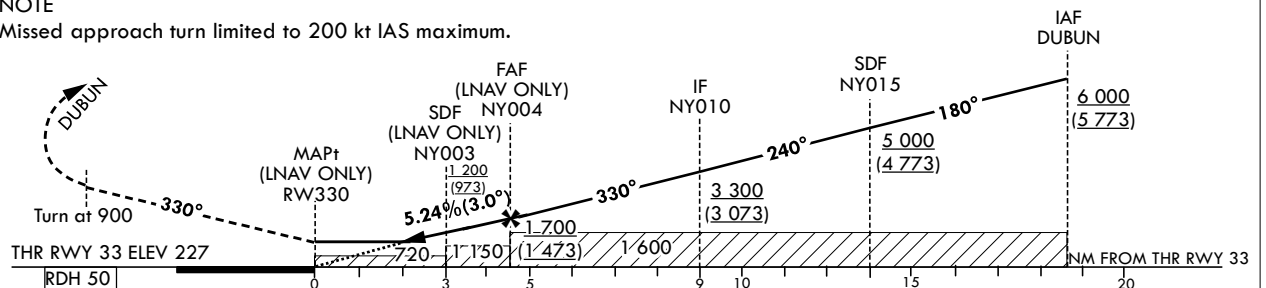
Note : Approach and circle-to-land Under ICAO Flight Procedures.



Climb on HDG 330° to 900 ft,  
then turn right to DUBUN and hold at 6 000 ft. Hold as published.

Missed approach turn limited to 200 kt IAS maximum.

TRANSITION LVL FL 140



						Knots	60	90	120	150	180	
OCA (H)		A	B	C	D	Rate of descent	V/V fpm	318	478	637	796	955
Straight-in Approach	LNAV/VNAV	640 (413)				*Timing Not authorized for defining MAPt. *Circling Not authorized west of RWY 15-33, area on between R 150 and R 315 YAG and area beyond 6 DME of between R 315 and R 360 YAG.						
	LNAV	720 (493)										
Circling		720 (479)	740 (499)	1 210 (969)	1 230 (989)							

Change : Information of landing minima(OCA(H)).
---

YANGYANG/Intl(RKNY)  
RNP RWY 33

## AERONAUTICAL DATA TABULATION

## Instrument Approach Procedure Coding Tables

RNP RWY 33 - via DUBUN(IAF)

Serial Number	Path Descriptor	Waypoint Identifier	Fly-over	Course/Track °M(°T)	Distance (NM)	Turn direction	Altitude (ft)	Speed (kt)	Coordinates	VPA/ TCH*	Navigation specification	Remarks
001	IF	DUBUN	-	-	-	-	+6 000	-	38°05'14.5"N 128°52'13.8"E	-	RNP APCH	IAF
002	TF	NY015	-	180(171.1)	6.8	-	+5 000	-	37°58'31.2"N 128°53'33.6"E	-	RNP APCH	SDF
003	TF	NY010	-	240(231.1)	5.0	-	+3 300	-	37°55'22.3"N 128°48'38.8"E	-	RNP APCH	IF
004	TF	NY004	-	330(321.0)	5.5	-	+1 700	-	37°59'40.6"N 128°44'14.9"E	-	RNP APCH	FAF
005	TF	NY003	-	330(321.0)	1.5	-	+1 200	-	38°00'49.2"N 128°43'04.7"E	-	RNP APCH	SDF
006	TF	RW330	Y	330(321.0)	3.0	-	+720	-	38°03'09.21"N 128°40'41.25"E	-3.00/50	RNP APCH	MAPt
007	VA	ALT	Y	330(321.0)	-	R	+900	-200	-	-	RNP APCH	-
008	DF	DUBUN	Y	-	-	L	@6 000	-200	38°05'14.5"N 128°52'13.8"E	-	RNP APCH	MAHF

## HOLDING PROCEDURE

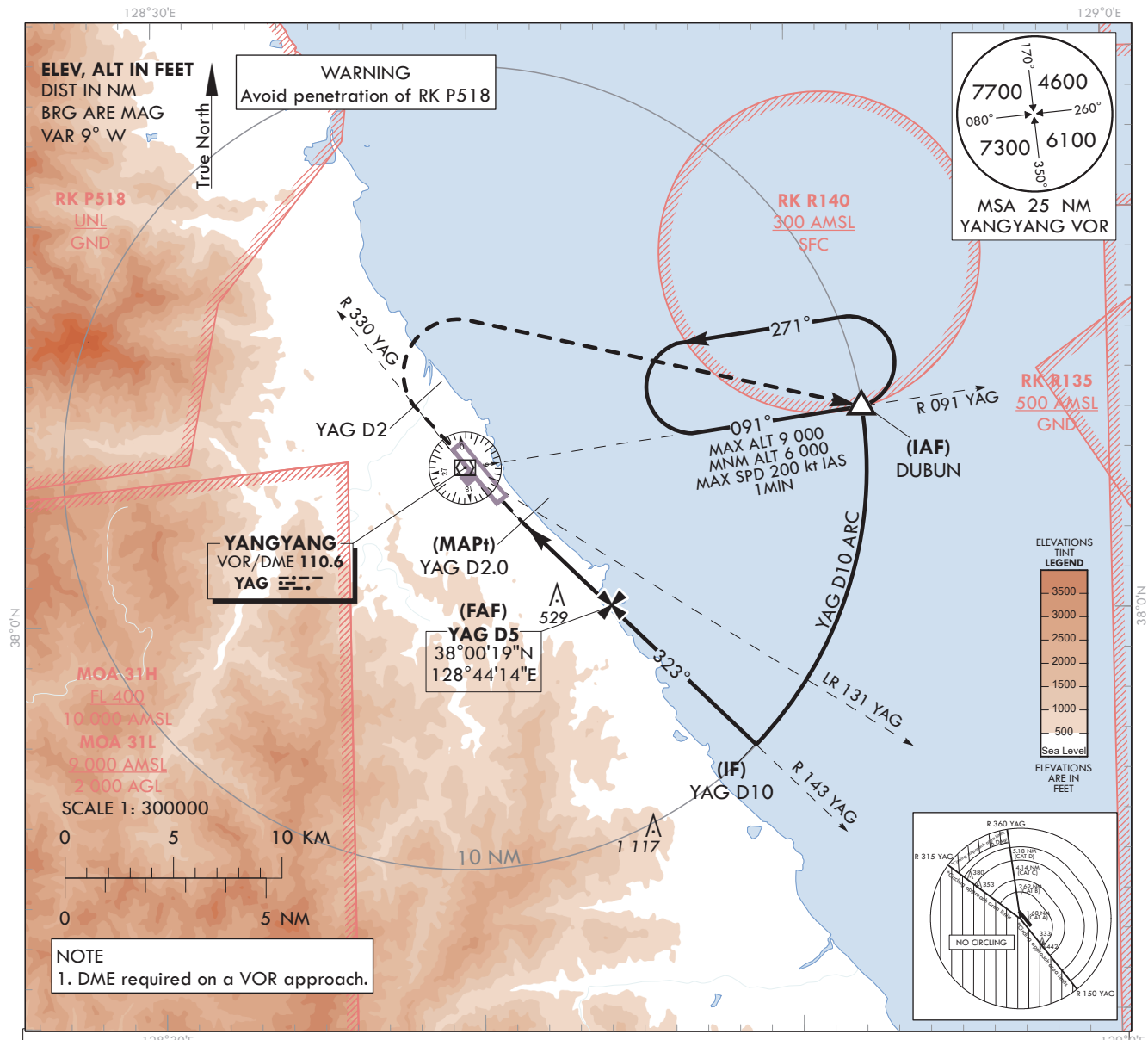
Holding Identification	Path Descriptor	Waypoint Identifier	Fly-over	Course/Track °M(°T)	Time (Min)	Turn direction	Altitude (ft)	Speed (kt)	Coordinates	VPA/ TCH*	Navigation specification	Remarks
RNP RWY 33	HM	DUBUN	Y	091(081.7)	1	L	-9 000 +6 000	-200	38°05'14.5"N 128°52'13.8"E	-	RNAV 1	1 MIN (Outbound Leg)

\* The term TCH equates to the use of the term RDH, within this context of the FAS data block.

GANGNEUNG	APP	124.6
YANGYANG	TWR	118.85
		124.375

**VOR RWY 33**

128°30'E

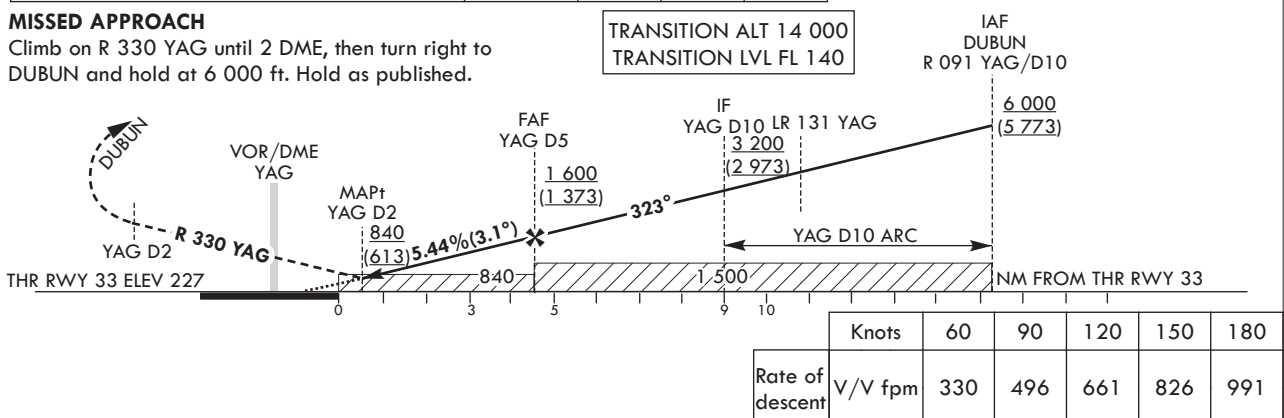


RECOMMENDED PROFILE	DME YAG	5	4	3	NOTE Missed approach turn limited to 200 kt IAS maximum.
Final Approach Gradient 5.44%, 330 ft/NM	ALT(HGT)	1600 (1 373)	1 269 (1 042)	938 (711)	

Climb on R 330 YAG until 2 DME, then turn right to DUBUN and hold at 6 000 ft. Hold as published.

TRANSITION ALT 14 000  
TRANSITION LVL FL 140

NOTE  
Missed approach turn limited to 200 kt IAS maximum.



OCA (H)	A	B	C	D	*Timing Not authorized for defining MAPt. *Circling Not authorized west of RWY 15-33, area on between R 150 and R 315 YAG and area beyond 6 DME of between R 315 and R 360 YAG.
Straight-in Approach	840 (613)				
Circling	840 (599)	840 (599)	1 210 (969)	1 230 (989)	

OFFICE OF CIVIL AVIATION

**AIRAC AIP AMDT 9/24**  
**Effective : 1600UTC 30 OCT 2024**

YANGYANG/Intl(RKNY)  
VOR RWY 33

## AERONAUTICAL DATA TABULATION

VOR Approach to RWY 33 from DUBUN		
Fix/Point		Coordinates
DUBUN(IAF)		38°05'14.5"N 128°52'13.8"E
D10.0 YAG(IF)	BRG 323.00° / 10.00 NM YAG	37°56'49.6"N 128°48'46.6"E
D5.0 YAG(FAF)	BRG 323.00° / 5.00 NM YAG	38°00'18.8"N 128°44'14.2"E
D2.0 YAG(MAPt)	BRG 323.00° / 2.00 NM YAG	38°02'24.3"N 128°41'30.7"E
THR RWY 33	Final Approach Descent Angle 3.11°	38°03'09.21"N 128°40'41.25"E
YAG VOR/DME		38°03'48.0"N 128°39'41.3"E
D2 YAG	R 330 YAG/ 2.00 NM YAG	38°05'21.3"N 128°38'06.0"E
DUBUN	R 091 YAG/ 10.00 NM YAG	38°05'14.5"N 128°52'13.8"E